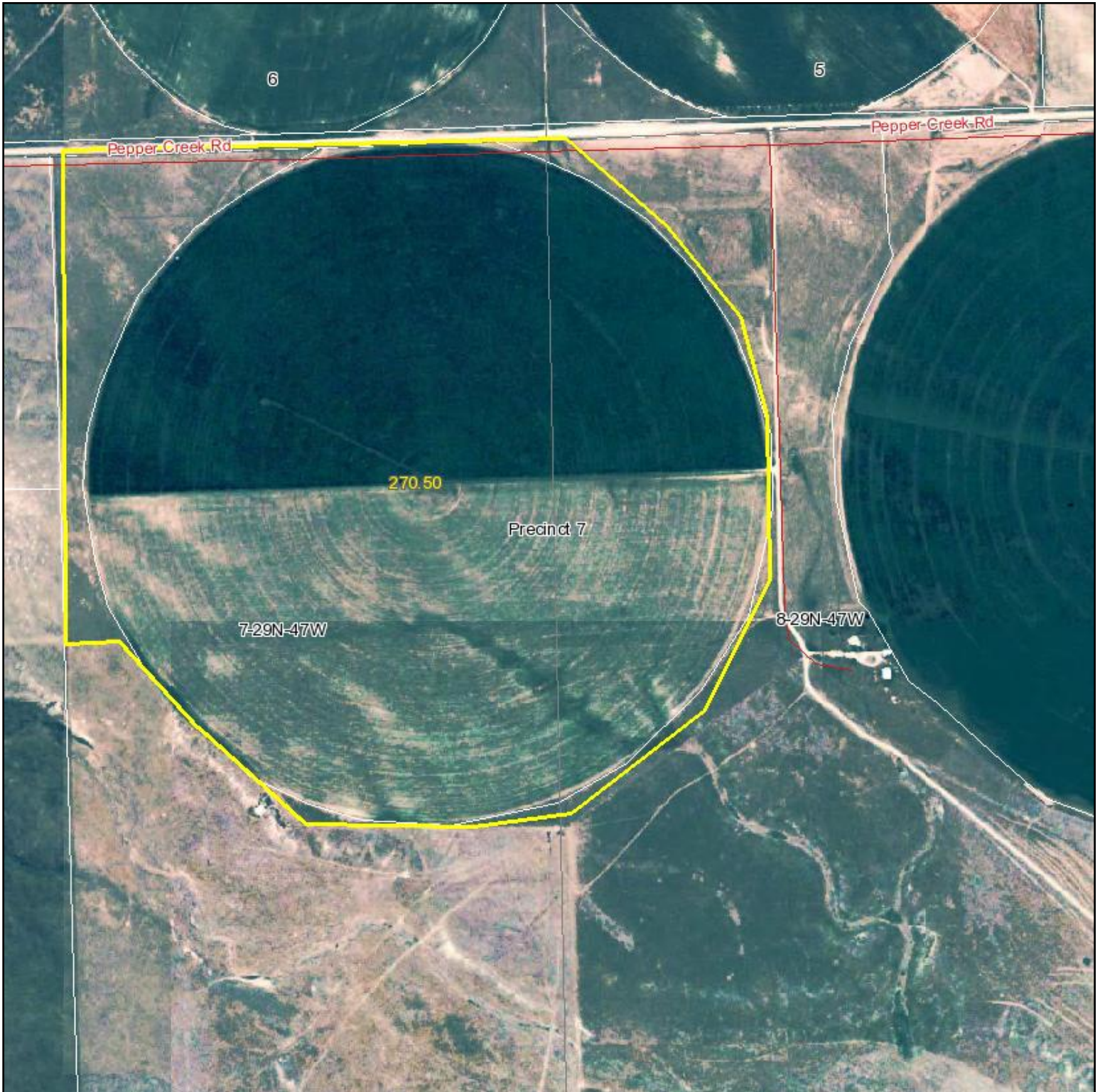


# Aerial Map



**NAA**  
KRAUPIE'S  
REAL ESTATE & AUCTIONEERS  
917 Main St. PO Box 100 Strongsville, NE 68059  
308-262-1150 www.farmaction.net

Maps provided by:  
**surety**  
CUSTOMIZED ONLINE MAPPING

©AgriData, Inc. 2009  
www.AgriDataInc.com

**7-29N-47W**  
**Dawes County**  
**Nebraska**

map center: 42° 30' 17.46, 102° 52' 17.18

scale: 10148



10/29/2009