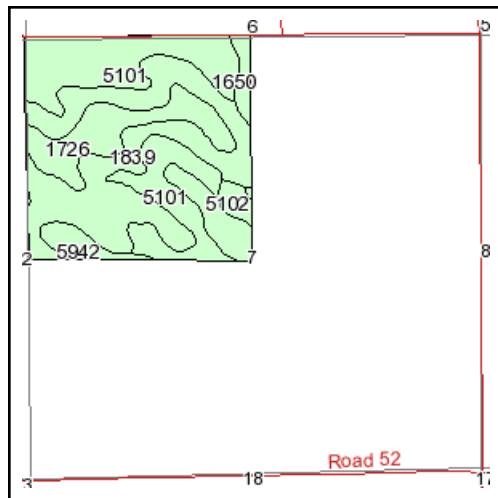
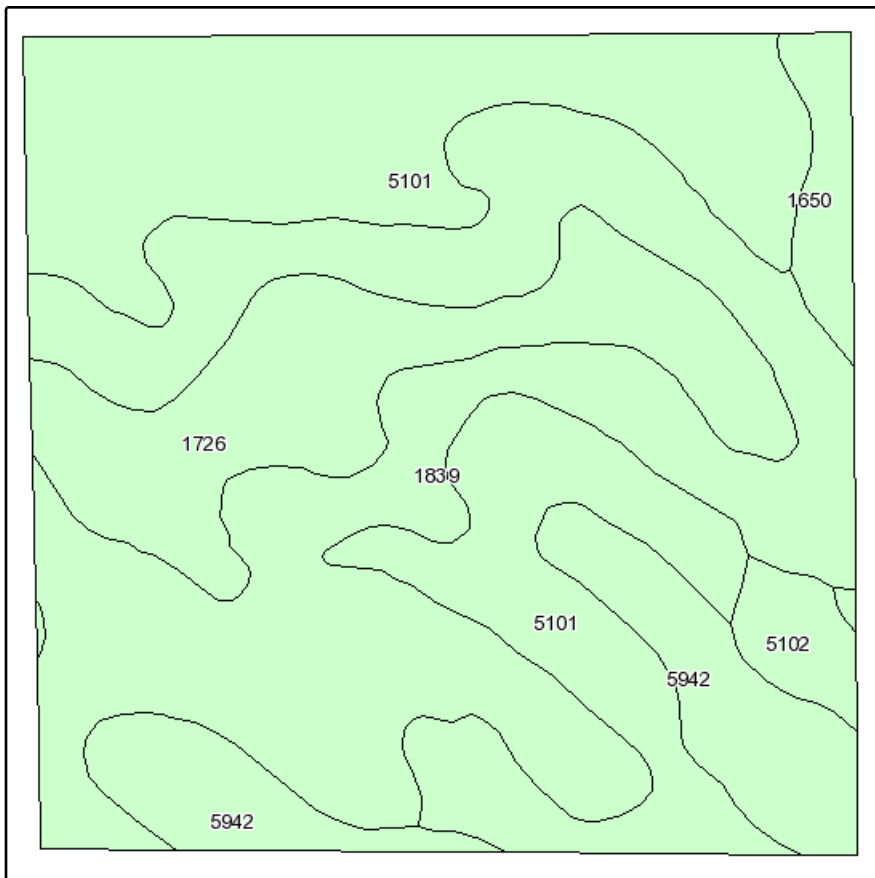


# Soils Map



State: **Nebraska**  
 County: **Cheyenne**  
 Location: **007-016N-052W**  
 Township: **Potter**  
 Acres: **163.3**  
 Date: **9/25/2009**

Fsa borders provided by the Farm Service Agency as of May 23, 2008.  
 Soils data provided by USDA and NRCS.



Maps provided by:



©AgriData, Inc 2008  
 www.AgriDataInc.com

Code	Soil Description	Acres	Percent of field	Non-Irr Class	Irr Class	SRPG	Alfalfa hay Irrigated	Alfalfa hay	Barley	Barley Irrigated	Corn Irrigated	Corn silage Irrigated	Dry beans Irrigated	Grain sorghum	Grain sorghum Irrigated
1839	Sidney-Canyon complex, 3 to 9 percent slopes	62.8	38.4%	Vs		25	4.6				118				
5101	Alliance loam, 1 to 3 percent slopes	53.6	32.8%	Ile	Ile	61	6.1				145		38		
1726	Rosebud loam, 1 to 3 percent slopes	23.6	14.4%	IIle	IIle	31	5.1	1.6			130		34	35	
5942	Duroc loam, 0 to 1 percent slopes	16	9.8%	IIc	I	56	6		36	70	150		40		
1650	Kuma loam, 0 to 1 percent slopes	4	2.4%	IIc	I	58	6		36	80	180	28		38	
5102	Alliance loam, 3 to 6 percent slopes	3.3	2.0%	IIle	IIle	57	5.3				130		36		
<b>Weighted Average</b>						<b>42.1</b>	<b>5.3</b>	<b>0.2</b>	<b>4.4</b>	<b>8.8</b>	<b>133.2</b>	<b>0.7</b>	<b>22</b>	<b>6</b>	