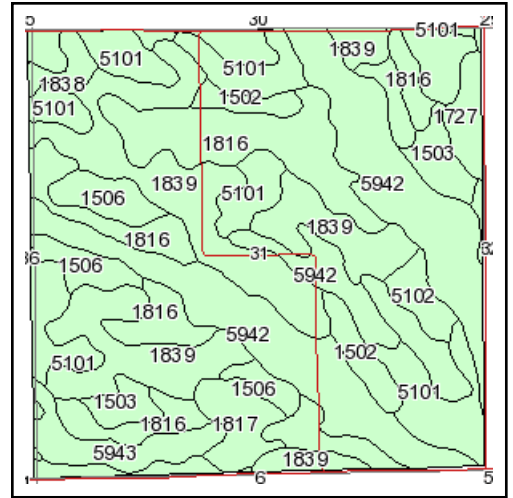
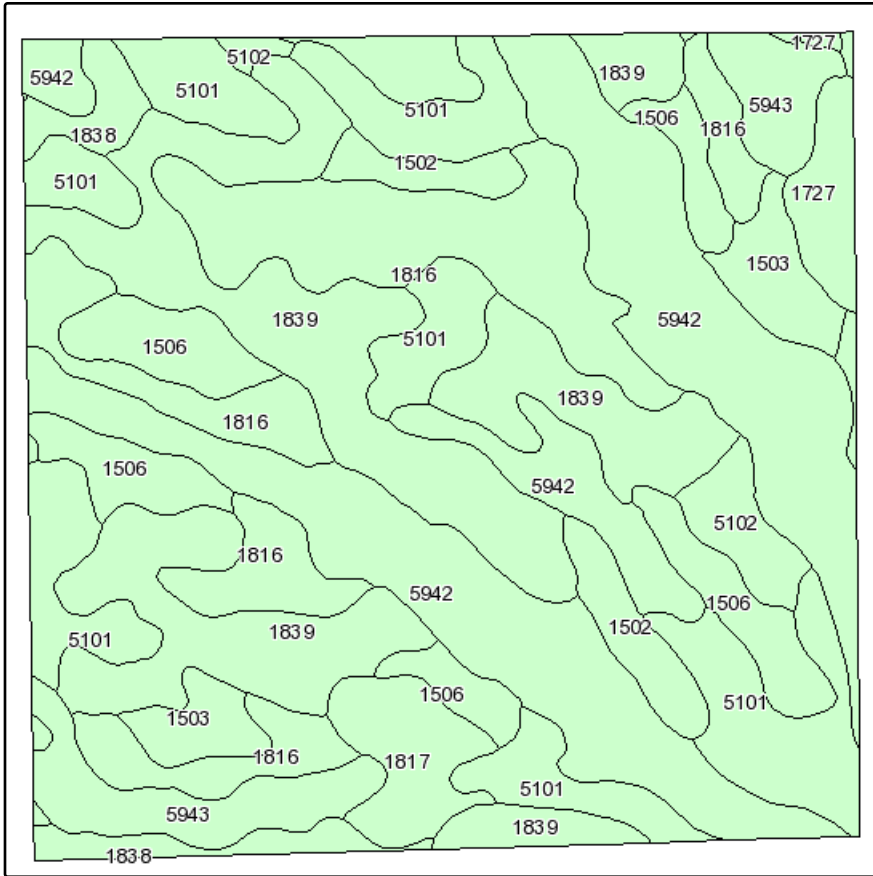
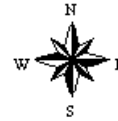


# Soils Map



State: **Nebraska**  
 County: **Cheyenne**  
 Location: **031-016N-052W**  
 Township: **Potter**  
 Acres: **639.5**  
 Date: **9/25/2009**

Fsa borders provided by the Farm Service Agency as of May 23, 2008.  
Soils data provided by USDA and NRCS.



Maps provided by:



©AgriData, Inc 2008  
www.AgriDataInc.com

Code	Soil Description	Acres	Percent of field	Non-Irr Class	Irr Class	SRPG	Alfalfa hay Irrigated	Alfalfa hay	Barley	Barley Irrigated	Corn Irrigated	Dry beans Irrigated	Grain sorghum	Grain sorghum Irrigated	Mill
5942	Duroc loam, 0 to 1 percent slopes	142.3	22.3%	Ilc	I	56	6		36	70	150	40			
1839	Sidney-Canyon complex, 3 to 9 percent slopes	142.1	22.2%	Vs		25	4.6				118				
1816	Satanta loam, gravelly substratum, 1 to 3 percent slopes	95.6	15.0%	Ile	Ile	57	5.3				138	38			
5101	Alliance loam, 1 to 3 percent slopes	90.4	14.1%	Ile	Ile	61	6.1				145	38			
1506	Altvan-Dix complex, 3 to 9 percent slopes	46.7	7.3%	Vs	IVe	27	3.9				100		28		
5943	Duroc loam, 1 to 3 percent slopes	30.8	4.8%	Ile	Ile	54	5.5		33	60	140	38			
1503	Altvan loam, 3 to 6 percent slopes	18.9	3.0%	IVe	IVe	45	3.9				100		28		
1817	Satanta loam, gravelly substratum, 3 to 6 percent slopes	18.5	2.9%	Ille	Ille	55	4.5				125	30			
1502	Altvan loam, 1 to 3 percent slopes	17.1	2.7%	Ille	Ille	47	4.3				115	33	34		
1838	Sidney loam, 3 to 6 percent slopes	14.5	2.3%	Ille	Ille	42	4.8				125				
5102	Alliance loam, 3 to 6 percent slopes	11.4	1.8%	Ille	Ille	57	5.3				130	36			

1727	Rosebud loam, 3 to 6 percent slopes	11.2	1.8%	IVe	IIIe	30	4.8	1.5			120	30	32	95
<b>Weighted Average</b>						<b>46.5</b>	<b>5.2</b>	<b>0</b>	<b>9.6</b>	<b>18.5</b>	<b>131.9</b>	<b>24.8</b>	<b>4.4</b>	<b>1.7</b>