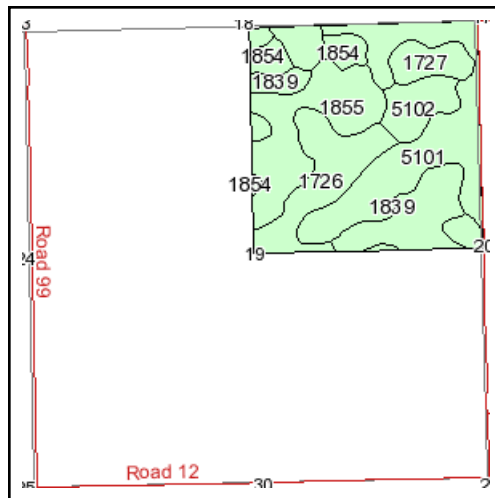
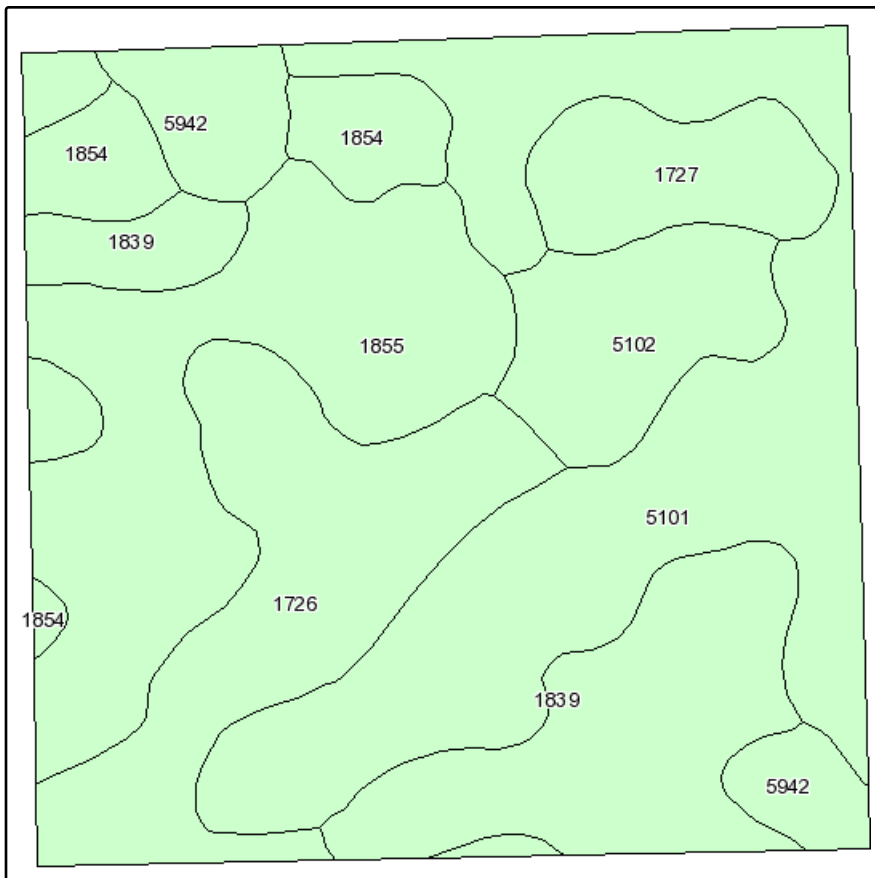


Soils Map



State: **Nebraska**
 County: **Cheyenne**
 Location: **019-013N-050W**
 Township: **Sidney 4A**
 Acres: **160.1**
 Date: **9/25/2009**

Fsa borders provided by the Farm Service Agency as of May 23, 2008.
 Soils data provided by USDA and NRCS.



Maps provided by:



©AgriData, Inc 2008
 www.AgriDataInc.com

Code	Soil Description	Acres	Percent of field	SRPG Legend	Non-Irr Class	Irr Class	SRPG	Corn Irrigated	Corn	Winter wheat	Winter wheat Irrigated
5101	Alliance loam, 1 to 3 percent slopes	45	28.1%		Ile	Ile	61	145		42	
1855	Ulysses loam, 3 to 6 percent slopes	31.7	19.8%		IIIe	IIIe	47	4.5	125	24	57
1726	Rosebud loam, 1 to 3 percent slopes	24.2	15.1%		IIIe	IIIe	31	130		35	
1839	Sidney-Canyon complex, 3 to 9 percent slopes	22.3	13.9%		Vs		25	118		28	
5102	Alliance loam, 3 to 6 percent slopes	10.8	6.7%		IIIe	IIIe	57	130		38	
1854	Ulysses loam, 1 to 3 percent slopes	9.3	5.8%		Ile	Ile	49	5.5	135	26	60
1727	Rosebud loam, 3 to 6 percent slopes	8.7	5.4%		IVe	IIIe	30	120		32	
5942	Duroc loam, 0 to 1 percent slopes	8.1	5.0%		Ilc	I	56	150		45	
Weighted Average							45.7	100.7	32.6	33.8	14.8