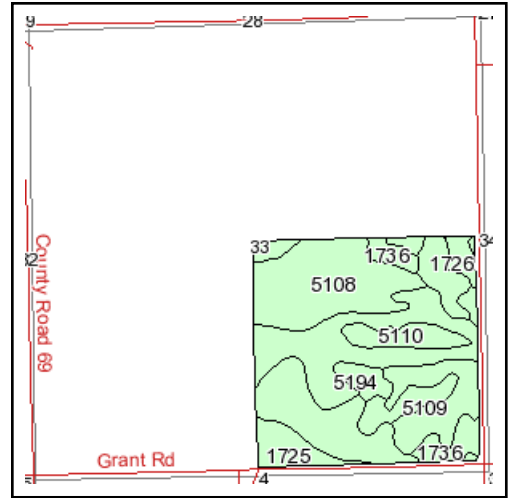
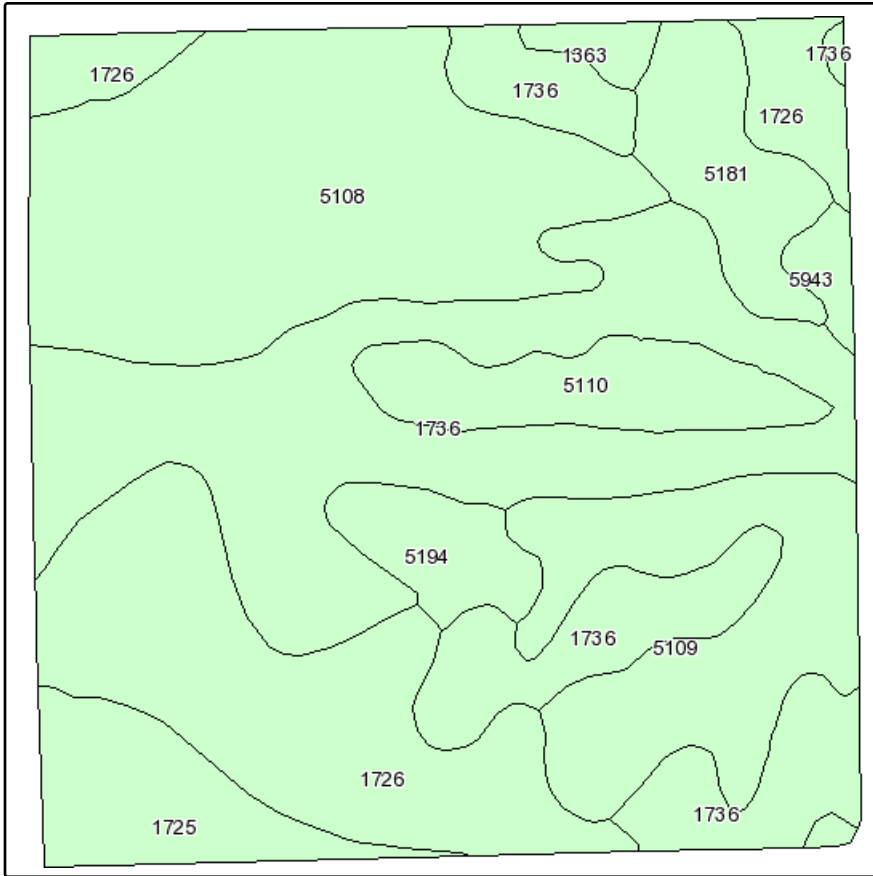


Soils Map



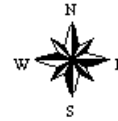
State: **Nebraska**
 County: **Box Butte**
 Location: **033-027N-049W**
 Township: **Nonpareil**
 Acres: **159.3**
 Date: **1/14/2010**



KRAUPIE'S
REAL ESTATE & AUCTIONEERS
917 Main St. PO Box 100 Bridgeport, NE 69336
 308-262-1150 www.farmauction.net



Fsa borders provided by the Farm Service Agency as of May 23, 2008.
 Soils data provided by USDA and NRCS.



Maps provided by:



©AgriData, Inc 2008
 www.AgriDataInc.com

Code	Soil Description	Acres	Percent of field	SRPG Legend	Non-Irr Class	Irr Class	Productivity Index	SRPG	Alfalfa hay	Alfalfa hay Irrigated	Corn Irrigated	Dry beans Irrigated	Winter wheat
1736	Rosebud-Canyon complex, 3 to 9 percent slopes	49.2	30.8%		Vs	IVe	19	20	1	3.8	105	25	28
5108	Alliance-Rosebud loams, 1 to 3 percent slopes	34.4	21.6%		Ile	Ile	45	46	1.5	5	127	33	38
1726	Rosebud loam, 1 to 3 percent slopes	28.7	18.0%		IIle	IIle	32	32	1.3	4.8	123	30	36
5109	Alliance-Rosebud loams, 3 to 6 percent slopes	16.6	10.5%		IIIle	IIIle	44	44	1.2	4.5	112	28	32
1725	Rosebud loam, 0 to 1 percent slopes	8	5.0%		IIc	I	33	33	1.6	5.2	133	35	40
5110	Alliance-Rosebud loams, 6 to 11 percent slopes	7.8	4.9%		IVe	IVe	40	40	1	4			27
5181	Hemingford loam, 3 to 6 percent slopes	7.4	4.6%		IIIle	IIIle	51	51	1.2	4.5	112	28	32
5194	Norrest loam, 6 to 11 percent slopes	4.5	2.8%		IVe	IVe	20	20	0.7				23
5943	Duroc loam, 1 to 3 percent slopes	1.4	0.9%		Ile	Ile	54	55	1.8	5.4	132	35	42
1363	Bridget very fine sandy loam, 3 to 6 percent slopes	1.3	0.8%		IIIle	IIIle	51	51	1.2	4.7	115	30	34
Weighted Average							33.4	33.9	1.2	4.3	107.6	26.8	32.8